

project manager: **G. HARRIS / MESAS STORM**  
 designed by: **SEP**  
 drawn by: **CKH**

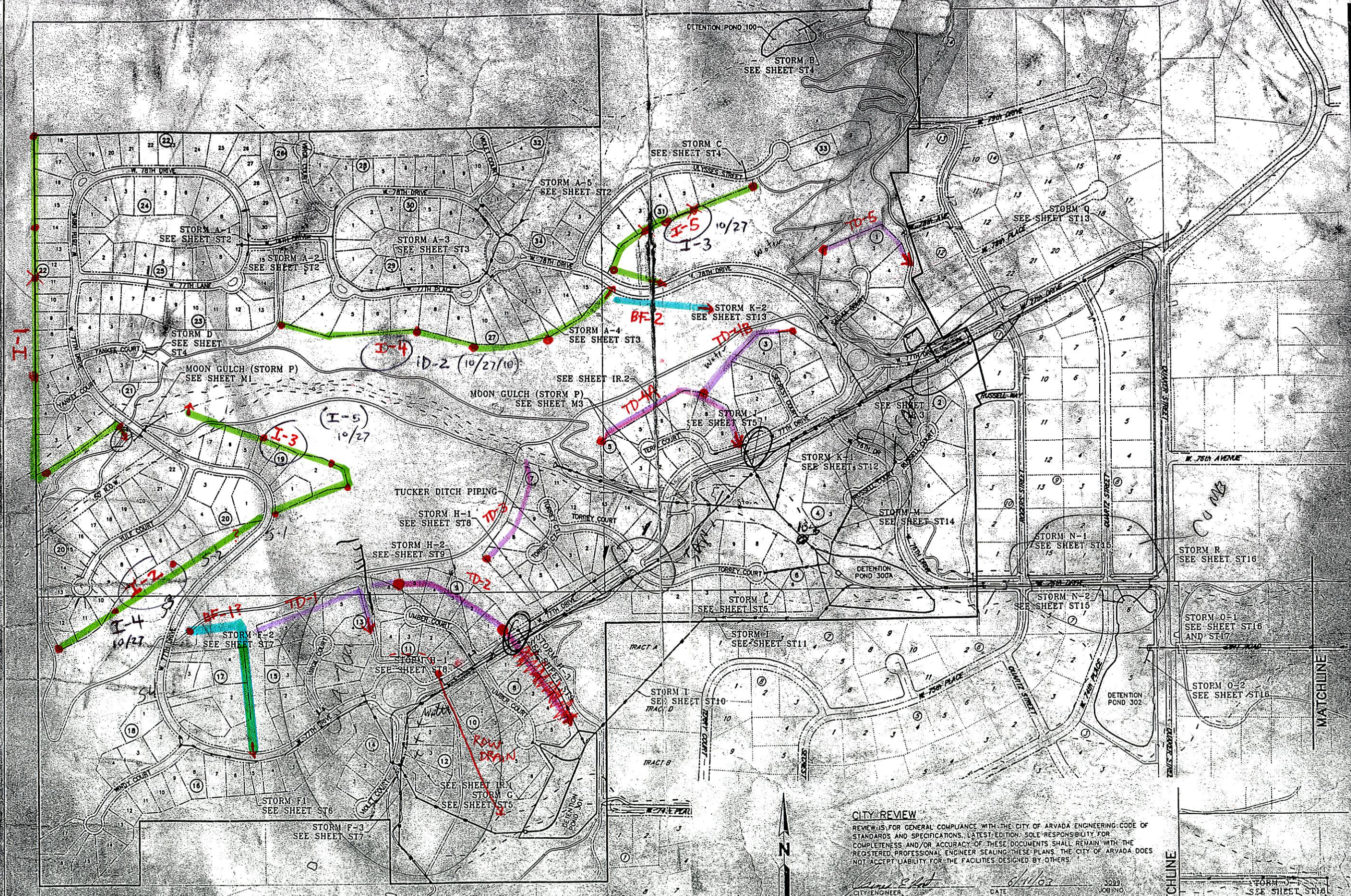
**MARTIN / MARTIN**  
 CONSULTING ENGINEERS  
 2351 KIPLING  
 P.O. BOX 400  
 WHEAT RIDGE, CO  
 80054-0400  
 303.431.9100  
 FAX 303.431.9101



**SPRING MESA SUBDIVISION**  
**STORM SEWER KEY MAP**

date: APRIL 6, 2001  
 job number: 14144C02  
 design by: S. PALING  
 drawn by: C. HAMMACK  
 checked by: W. HARRIS

sheet number



**CITY REVIEW**  
 REVIEW IS FOR GENERAL COMPLIANCE WITH THE CITY OF ARVADA ENGINEERING CODE OF STANDARDS AND SPECIFICATIONS, LATEST EDITION. SOLE RESPONSIBILITY FOR COMPLETENESS AND/OR ACCURACY OF THESE DOCUMENTS SHALL REMAIN WITH THE REGISTERED PROFESSIONAL ENGINEER SEALING THESE PLANS. THE CITY OF ARVADA DOES NOT ACCEPT LIABILITY FOR THE FACILITIES DESIGNED BY OTHERS.

City Engineer: *[Signature]*  
 DATE: 6/11/03  
 JOB NO: 3039



MATCHLINE

MATCHLINE

STORM J  
 SEE SHEET ST16  
 AND ST17

1035